

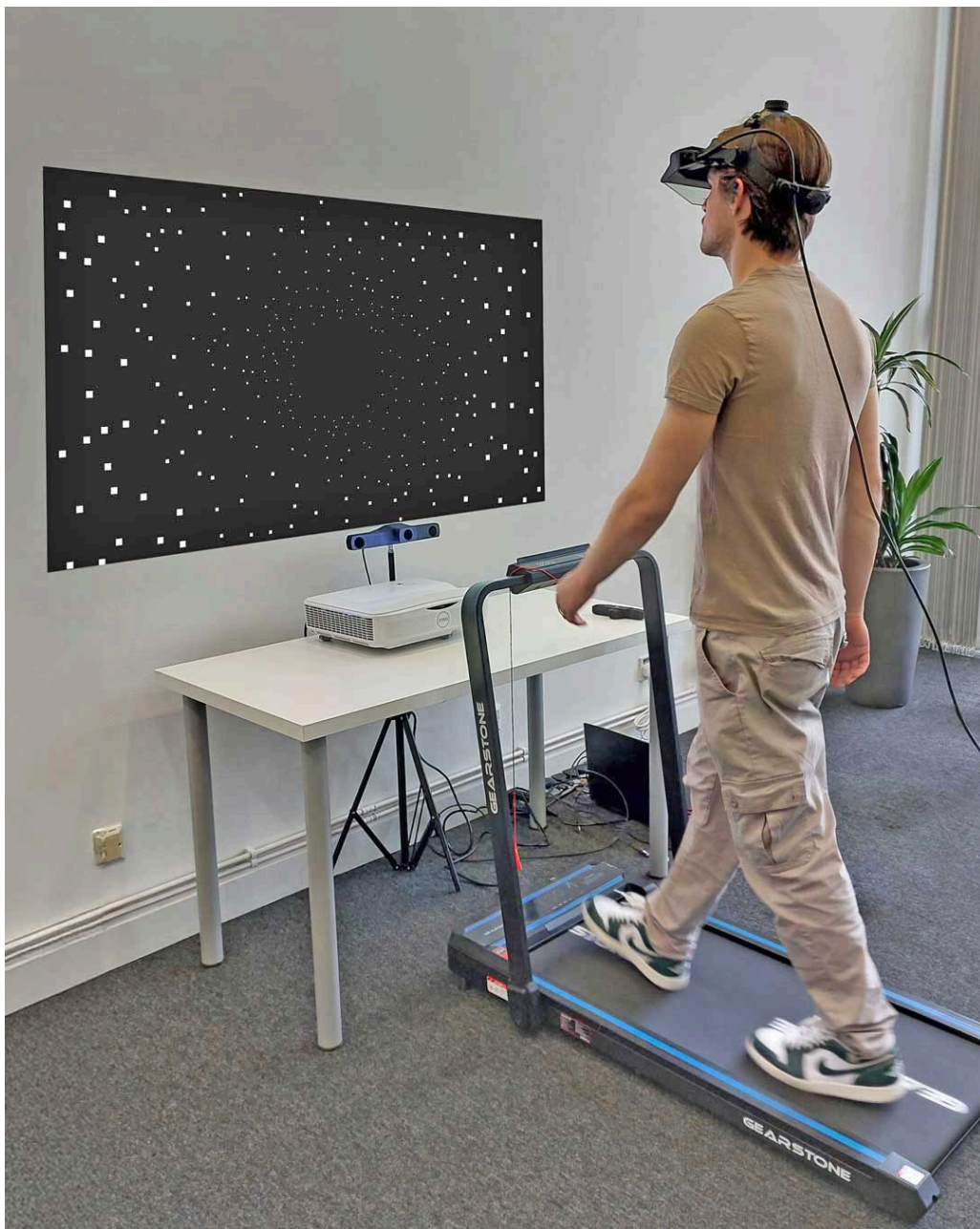
Now Available! The EyeLink 3: Head and Eye Tracking Combined



SR Research introduces the [EyeLink 3](#), an advanced head and eye tracker for screen-based research. It records synchronized head and eye data at up to 1000 Hz, offers full [six-degrees of freedom head-tracking](#) and provides novel pixel-based [eye and head position data, along with typical gaze data](#). The EyeLink 3 also records high-speed (up to 500 fps) eye video, opening up new possibilities for exploring perceptual and cognitive processes in a more natural context.



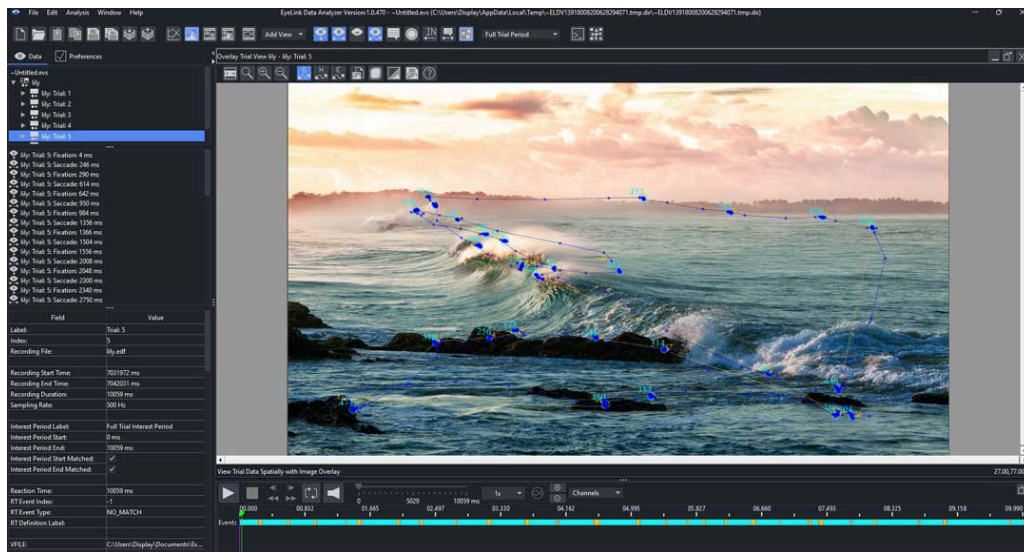
- The EyeLink 3 is perfect for research into eye-head coordination in multiple research areas including:
 - Standard Behavioral Tasks (e.g., reading, visual search, reaching/pointing)
 - Clinical Settings (e.g., vestibular dysfunction / VOR, nystagmus / gaze during gait)
 - Oculomotor Behavior (e.g., saccades, torsion)
- The EyeLink 3's high speed eye video recordings open up a range of opportunities for methodological research, including:
 - Parsing Algorithms
 - Post Saccadic Oscillations
 - Pupillary Dynamics
 - Blink Detection; Blink / Startle Reflex



Check out the [brochure](#) for further details, or contact us to learn how the EyeLink 3 can enhance your research!

Email

Software Updates



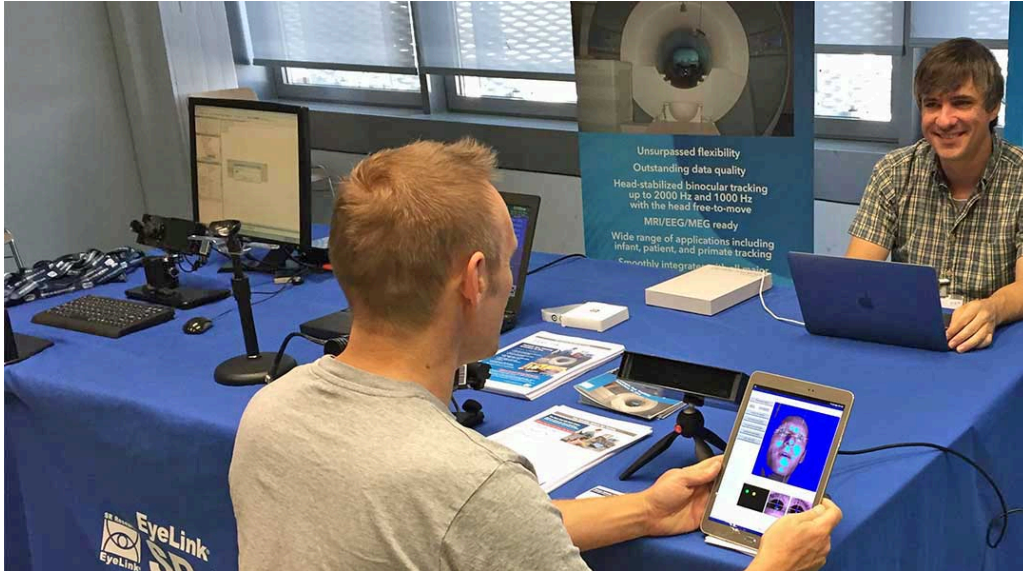
To coincide with the release of the EyeLink 3, we have a new-look Windows version of Data Viewer, our analysis software. This latest version allows the rich head and eye tracking data provided by the EyeLink 3 to be visualized both temporally and spatially, and allows users to quickly generate tab-delimited summary reports based on interest areas, fixations, saccades, time bins, or samples. Data Viewer features include:

- Animation Playback View shows a movie of the trial with pixel coordinate data (gaze / eye-in-head / head-in-space) overlaid (including bee-swarm for multiple trials)
- Spatial Overlay View superimposes saccade and fixation scanpath information over an image. Again, all pixel based data, including head and eye-in-head data can be plotted
- Temporal Graph View supports visualization of eye, head and eye-in-head data over time
- A new Timeline provides a full-featured player for trial recording playback that is available in all viewing modes. It allows users to synchronize playback positions across different viewing modes and easily seek specific positions within the data
- A new Video playback feature allows playback of EyeLink 3 Eye Videos, as well as accessory live audio and video recordings of the participant collected via WebLink or the Participant Camera Plugin

The latest versions of all our software can be downloaded from our Support Forum.

Update Your Software

Conferences



We will be present at a number of conferences in the coming months, please come by our booth and say "hi" if you are attending!

- [Society for Research into Child Development \(SRCD\)](#), Minneapolis, USA, May 1-3
- [Association for Research in Vision and Ophthalmology \(ARVO\)](#), Salt Lake City, USA, May 4-8
- [Vision Sciences Society \(VSS\)](#), St. Pete Beach, Florida, USA, May 16-20
- [Eye Tracking Research and Applications \(ETRA\)](#), Tokyo, Japan, May 26-29

All 2025 Conferences

Publications

EyeLink Eye-Tracking
Publications Library

Our EyeLink publication's web page now includes over 13,000 English peer-reviewed research articles up to 2024, with some 2025s, featuring EyeLink eye trackers. The latest additions highlight a steady growth in EyeLink Portable Duo publications, and EyeLink eye tracker integrations with other biometric devices, including an interesting paper on [transcutaneous auricular vagus nerve stimulation](#). Congratulations to all contributors to our publications database! We look forward to adding even more publications in the future.

Publications Web Page

Contact Us!

Email or call us with any questions!

info@sr-research.com

Phone: 613-271-8686

Toll-Free: 1-866-821-0731



Copyright © 2025 SR Research Ltd., All rights reserved.
EyeLink is a registered trademark of SR Research Ltd.

You are receiving this email because you opted in at our website or Forum.

Our mailing address is:

SR Research Ltd.
35 Beaufort Dr.
Ottawa, Ontario K2L 2B9
Canada

[Add us to your address book](#)

[Unsubscribe](#)